



E -BULLETIN News

Friday 26 May 2023

Rockingham SHS Education Support Centre
 15 Read Street ROCKINGHAM
 T: 9523 7600 E: Rockingham.ESC@education.wa.edu.au

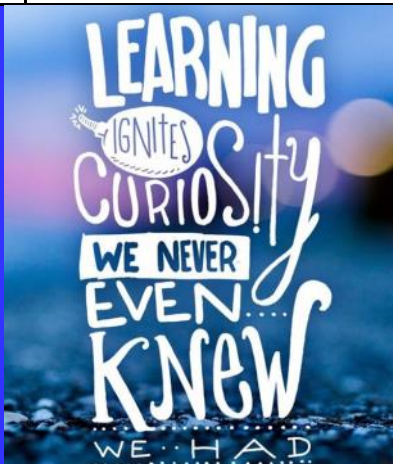
Term Dates 2023

Semester One 2023

TERM 1	Wednesday 1 February—Thursday, 6 April
BREAK	Friday 7, April—Sunday, 23 April
TERM 2	Monday, 24 April—School Development Day No school for students
	Wednesday, 26 April—Friday 30 June
BREAK	Saturday, 1 July—Sunday 16 July

Semester Two 2023

TERM 3	Monday, 17 July—School Development Day No school for students
	Tuesday, 18 July - Friday, 22 September
BREAK	Saturday, 23 September - Sunday, 8 October
TERM 4	Monday, 19 October & Friday 15 December— School Development Days No school for students
	Tuesday 10 October—Thursday 14 December



From The Principal Mrs Margaret Keen

Kaya.

We were delighted by the surprise announcement by the Premier that our schools, Rockingham Senior High School, and the Education Support Centre will be receiving **\$60 million dollar investment** in this year's state budget for upgrades and specialist facilities. I am not sure exactly what this will look like but am very excited to imagine what we can do to improve our facilities for our school community.

Not long after the amazing news regarding the funding from the state government I received notification that we had been successful in applying for the **School Upgrade Fund**, financed by the federal government, for a grant of \$25,000. This was earmarked for the wellbeing project to assist with providing alternative learning environments and we intend to buy outdoor gym equipment with the funds. Before we start purchasing equipment, we do need to have an idea of what changes are likely to occur with our facilities upgrade. very exciting!

We were fortunate to be offered an opportunity for our school take part in a new program, **Respectful Relationships**, to address Family and Domestic Violence (F&DV) in our community. We will be considering all aspects of how our school operates to ensure we build a culture, among both staff, students and community members, where gender stereotypes are challenged, gender-based discrimination is unacceptable and gender equality is actively promoted and modelled. The state government have committed to the program for the next two years in a bid to reduce domestic violence and gender inequality.

At the beginning of term our staff attended a **wellbeing conference** organised by our school's network, the Education Support South Network held at the Convention Centre. With over a thousand attendees, it was a fabulous opportunity for our staff to hear some key messages and network with staff from education support facilities across the south metropolitan region.

Thank you to the parents and families that were able to come along to our student assembly hosted by our year eleven students on Friday. We had a lot of hard-working students awarded with certificates of merit and a very interesting digital presentation from our year eleven students showcasing their activities at school and advice for future students when they get to year eleven.

International Day Against Homophobia, Biphobia & Transphobia

Last week we raised awareness for International Day Against Homophobia, Biphobia and Transphobia. We participated in a range of activities and the year 12 students had a visit from Hunter from Trans Folk of



Mother Day Raffle

The Fundraising Committee held the Mother's Day Raffle earlier this term.

Some very lucky Mums woke up to some lovely gifts on Mothers Day. The lucky winners are



Happy Mothers Day

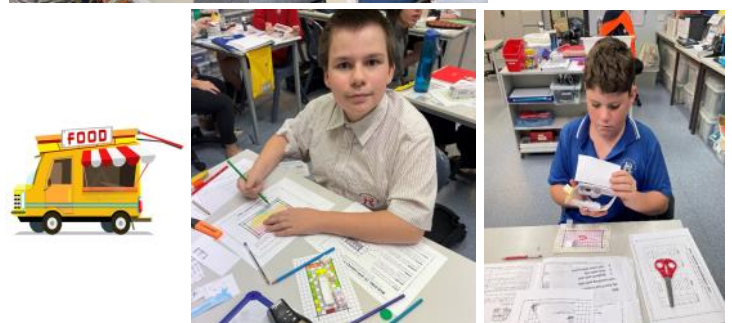
Year 8 Home Economics

Our wonderful year 8 students are doing a fantastic job in Home Economics this term. They recently made Apple Cinnamon Muffins which smelt amazing and were delicious! They were a hit with staff, siblings and students



Year 9 Food Truck Challenge

As part of our Business Course, our students have gone through the process of creating a food truck business. They had to decide on a name for their business and they had to come up with a menu. Once this had been done, they had to design their food truck to be presented at Assembly.



Year 7

The students in room 11 every Monday are working through a program called Open Parachute. We have been learning about 'Self Esteem and Positive Self Image.'

Also, on Mondays we select our student of the week. On Friday, we give the student of the week a compliment which we join into a compliment chain (the Student of The Week gives themselves a compliment!)

Some self-compliments heard include-

- *I can climb trees really well
- *I help others
- *I have a great sense of humour
- *I can do really tricky puzzles
- *I eat ice-cream the best
- *I can play a guitar pretty good
- *I play games
- *I look out for others
- *I can make others laugh, including Ms Baldwin

Room 11 students are an amazing, fun class!!!!!!!



Give Write

THANK
YOU
SO
MUCH

Give
Write!



A huge thank you to Give Write for donating stationary packs for our wonderful students.

CATCH UP ON ALL THE NEWS



<https://www.facebook.com/RockinghamshsESC>

Bush Rangers

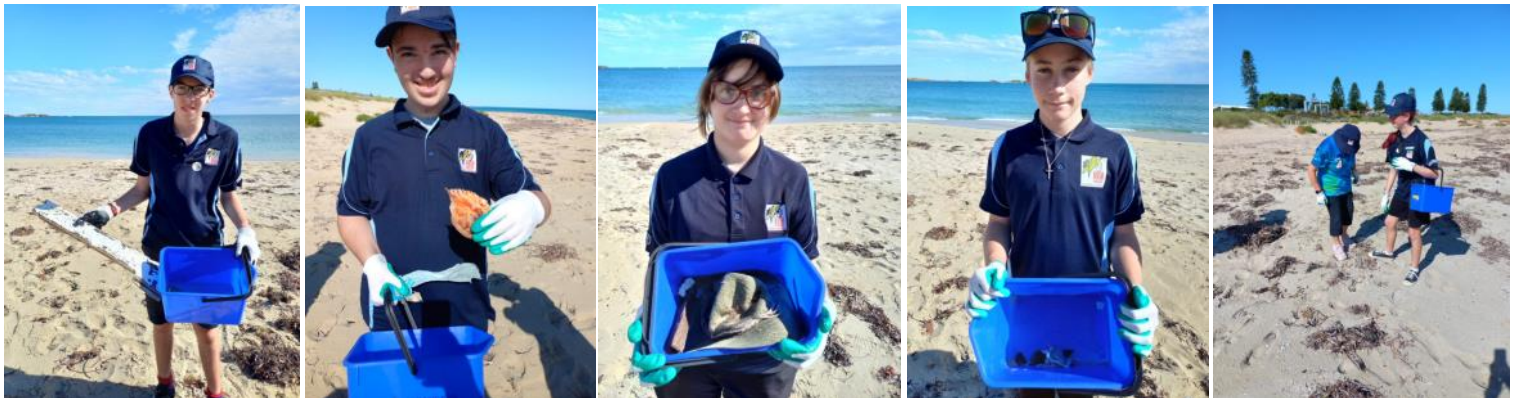
CRITTERS UP CLOSE

The Year 7, Year 8 and Senior Bush Rangers had the wonderful opportunity to work with PJ from Critters Up Close to meet a range of interesting animals. We got to learn about each animal, its classification, distinctive features, and threats impacting them. They got to meet and touch Bubbles and Squeak two blue-tongued lizards, Snorkel the snake-necked tortoise, Gizmo the sugar glider, Sponge Bob the hermit crab, Freddo the green tree frog, sea stars, two types of pythons, a tawny frogmouth and many others. Thank you, Critters Up Close for a wonderful



SHOALWATER ISLANDS MARINE PARK BEACH CLEAN UP

The Year 10 spent a glorious lesson at Shoalwater Islands Marine Park helping to remove marine debris from the beach. Magnificent work helping our local patch!



Bush Ranger Legends!!!!!!!!!!!!



Bush Rangers

WA BIRDS OF PREY

The Year 9 Bush Rangers were visited by amazing and incredible birds of prey from WA Birds of Prey. We met a Paper Planes movie celebrity in Jandoo, a whistling kite. Followed by GT, a brown Falcon, Crystal, a barn owl, Little Boo, a boobook, and Micro, a wedge-tailed eagle.

We discussed characteristics, unique adaptations, and had the chance to touch them. Crystal flew across the room silently, leaving the Bush Rangers amazed. It was all due to the serration on her feathers making her whisper quiet in flight. Later, the Bush Rangers got messy dissecting pellets the birds of prey had regurgitated. Thank you, WA Birds of Prey for a spectacular incursion.



BUZZ ED

Bees are vitally important in the world's ecosystem. Without bees, we would have little food to eat. These pollinators are in trouble. The Year 8, 9 and 10 Bush Rangers had the opportunity to learn why bees are critical and how they pollinate plants and produce honey with Buzz Ed. Luke asked for a Bush Ranger to help with his presentation. Aiden quickly dressed in a beekeeper suit and became an assistant beekeeper for a day. After many questions, they had an opportunity to work in small groups. A chance to taste honey, make a peg bee, spot the queen bee, and talk with Luke about his pathway to becoming a commercial beekeeper. Thank you, Buzz Ed!



Year 12 Room 6

Room six students have been hard at work for TAFE and Work Place Learning this term. Kayla and Dylan are really enjoying their work at Pet Stock and have worked hard cleaning, stocking shelves, and learning all about how a pet store runs.



Australia's Biggest Morning Tea

Our wonderful Dolphin Cafe students and staff put in an amazing effort to fundraise for Australia's Biggest Morning Tea on Thursday 25th of May. As well as offering their usual delicious cafe beverages, anyone who made a donation was treated to a yummy cake, with proceeds going to the Cancer Council for vital research, funding and support for people affected by cancer. Well done Dolphin Cafe students and staff.



Great job!



Australia's
**BIGGEST
MORNING
TEA**

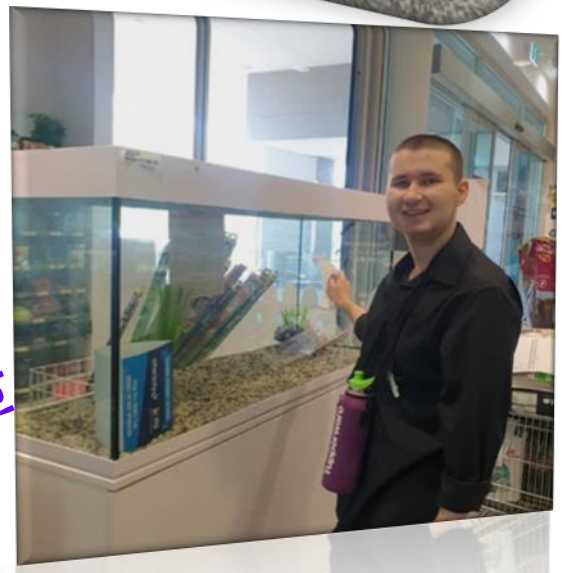
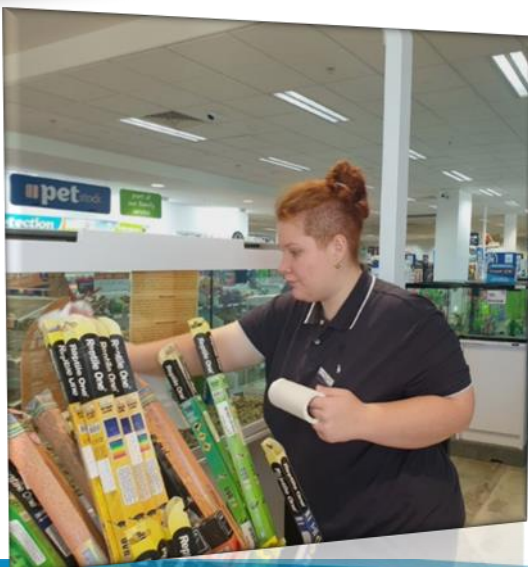
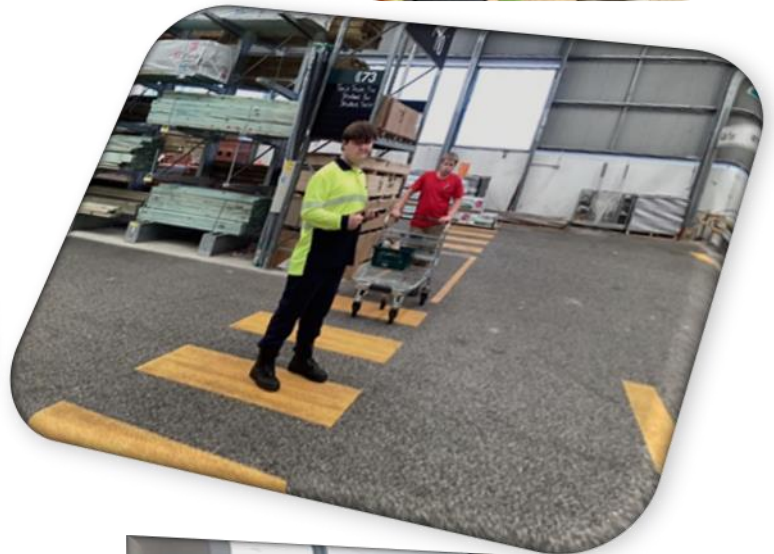
Work Place Learning

Throughout term 2, students in year 11 and 12 have been participating in workplace learning. Workplace learning is a wonderful opportunity for students to connect with local businesses while building their skills, knowledge and attitude in preparation for an independent future.

We would like to extend a massive thank you to those businesses that have welcomed students from our school. Your support is wonderful!

A big *thank you* to:

Woolworths Waikiki
Bertram Primary School
Elanora's Café
Petstock Rockingham
Bunnings Rockingham
Vinnies Rockingham



#workplacementLegends!

Mid Term Assembly Award Winners

Congratulations to all of the award winner from the Mid Term Assembly for Term 2.

Nominating Teacher	Classes/Options	Form	Year	Certificate of Achievement awarded Term 2 Week 5
Laura Baldwin	Class	R11	YR7	Simon BRUCE
Sammy Maxwell	Class	R2	YR8/9	Tyler WOODTHORPE
Jen Naude	Class	R8	YR9	Heath MONDON / Kallam SUTCLIFFE
Amy Nicholls	Class	R10	YR9/10	Gabriel PRESCOTT
Kama Pike & Marie Johnson	Class	R1	YR10	Logan THOMAS
Jo Lawler	Class	R5	YR11	Joshua BAUGHEN
Nat Crerar	Class	R6	YR12	Kayla CHIDGEY
Nicola Meegan	Class	R7	YR12	Kurt OMAR
Amanda Flood	WPL/VET	R5/6/7	Yr11/12	Joshua BAUGHEN / Kayla CHIDGEY
Jo Lawler	Café/VET	Various	YR11/12	Tiffney SUTHERLAND
Jo Lawler	Café/VET	MALI-	YR11/12	Billy SWIFT / Michael DOHERTY
Paul WILMOT	PE Class	R11	YR7	Chelsea BUSHELL
Paul WILMOT	PE Class	R2	YR8/9	Kobee SPENCER-PARTRIDGE
Paul WILMOT	PE Class	R8	YR9	N/A
Paul WILMOT	PE Class	R10	YR9/10	Isaiah FEHRENBACH
Paul WILMOT	PE Class	R1	YR10	Taj SCOTT
Paul WILMOT	PE Class	R5	YR11	Ryley BERGLUND
Paul WILMOT	PE Class	R6	YR12	Sarah WAGNER
Paul WILMOT	PE Class	R7	YR12	Ryan MEAD
Paul WILMOT	FOOD	R2/8	YR9	Kipcharlie LOWER
Paul WILMOT	FOOD	R5/6/7	YR10/11/1	Josh ZOUTMAN
Nicola Meegan	Business Enterprise	R5/6/7	YR11/2	Kayde JARRETT
Emma Mills	Art	R11	YR7	James HUGHES
Emma Mills	Art	R2/8	YR9	Chelsea FINNIGAN
Emma Mills	Art	R1/10	YR9/10	Eva IRVINE
Emma Mills	Art	R5/6/7	YR11/12	Ryan MEAD
Rachel Nixon	Bush Rangers	R11	YR7	Isaiah BRIDGER-MEYER
Rachel Nixon	Bush Rangers	R2	YR8	Georgia SAW
Rachel Nixon	Bush Rangers	R8	YR9	Heath MONDON
Rachel Nixon	Bush Rangers	R1/10	YR10	Jordan MAPLES
Rachel Nixon	Senior Bush Rang-	R5/6/7	YR11/12	Kurt OMAR
Melissa Reeves	Drama	R2/8	YR8/9	Aiden PROSSER
Melissa Reeves	Music	R1/10	YR9/10	Tamsin HYDE
RSHS Julia Nunez	Home Economics	R2/8	YR8/9	Tyler WOODTHORPE / Dwayne GIGGINS
RSHS Jake Dorrington	CODING	R1/10	YR9/10	Max LLOYD
RSHS Neil Robinson	Media	R5/6/7	YR11/12	Nathan MIFSUD

